

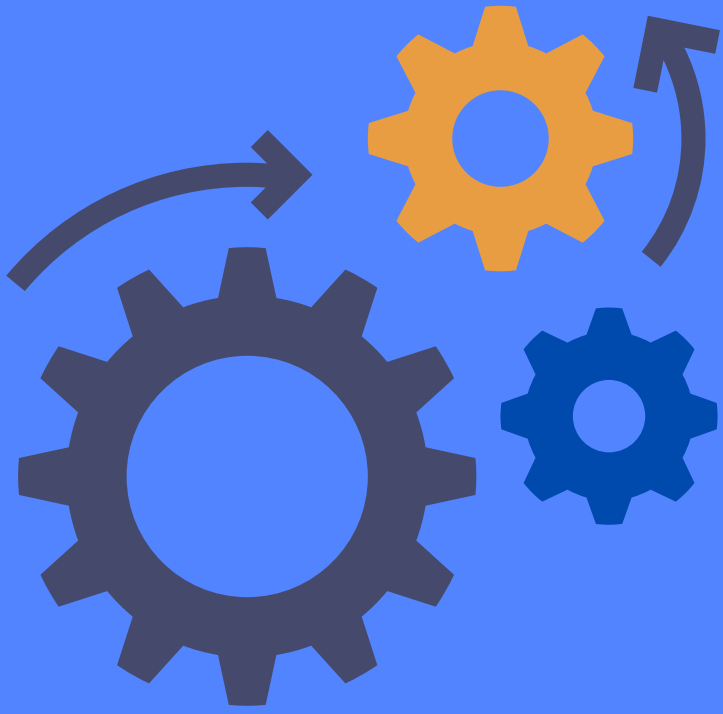


GoFlek



Unified Framework for AI
Analytics

The Platform



FlekML Engine

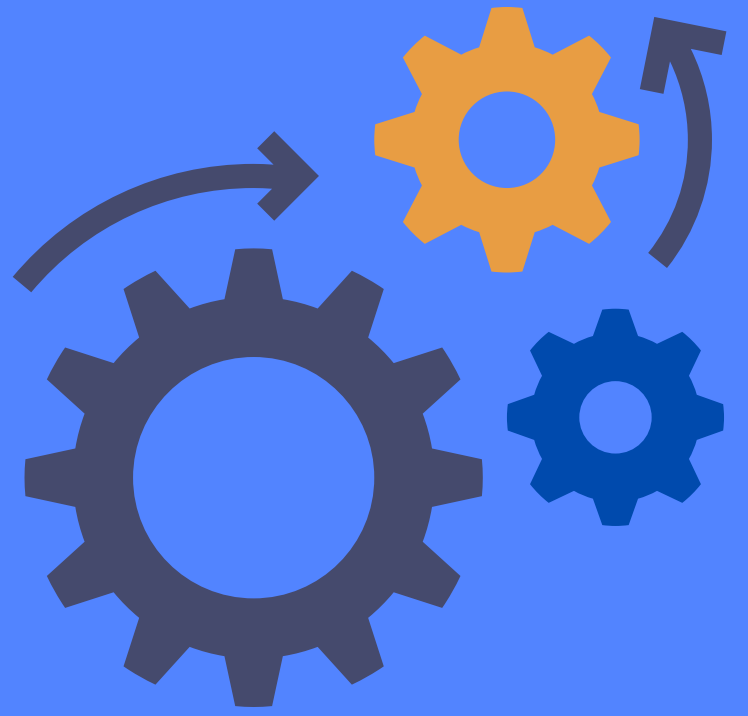


Flek Server



Python Toolkit

FlekML Engine



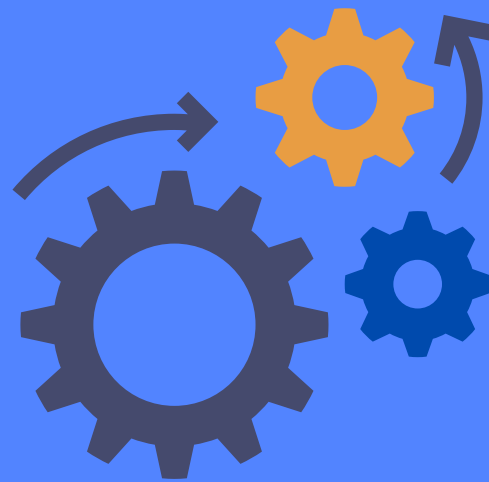
- FlekML is a machine learning engine with a built-in Probability machine.
- It learns a Unified Probabilistic Model from data and stores it.
- The engine serves stored models for analytics, enabling autolearning, pattern discovery and mining.
- It runs machine learning algorithms in Python or C, depending on the mode.

Machine Learning Pipeline

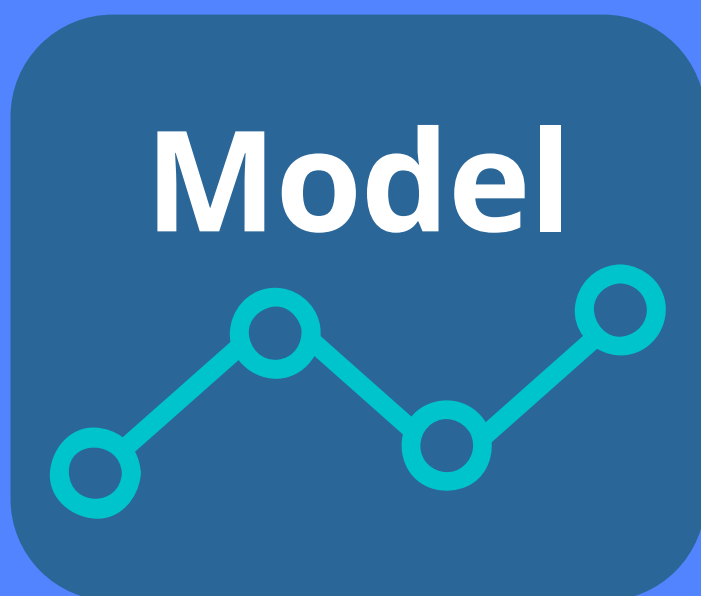
**Semi-
Structured
Raw Data**



**Core ML
Algorithms**



**Probability
Nuggets**



Flek Server



- FlekML engine supports standalone, local, and remote Flek Server modes.
- Programmers can switch modes seamlessly without code modifications.
- Flek Server ensures coding consistency across modes, simplifying transitions from testing to production.
- Secure HTTP communication with built-in safeguards and encryption protect data.

User Application

StandAlone

Local

Remote

Direct

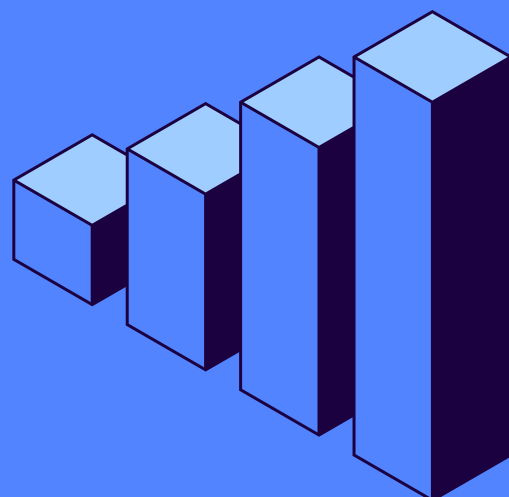
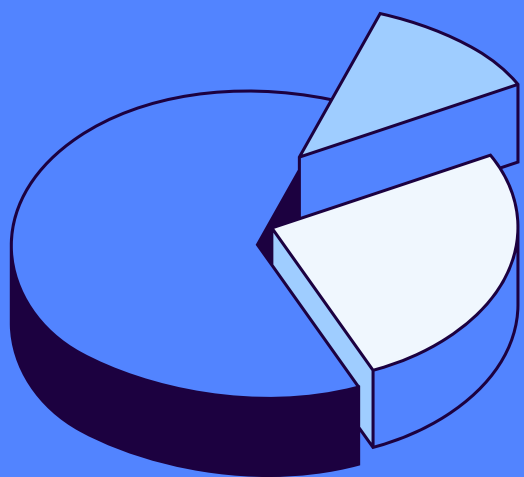
**HTTP Flek
REST**

**HTTP Flek
REST**

Python Toolkit



- Algorithmic Programming
- Jupyter notebooks
- Plot & Visualize
- Validate, trace results
- Ready-to-run programs



Machine Learning Comparison

Flek

- Engine-driven
- Queryable
- Interpretable
- Explainable
- Auto Learning
- Probabilistic

Others

- Mathematic Function
- Neural Network
- Run Algorithm
- Black Box
- Retraining & Tuning